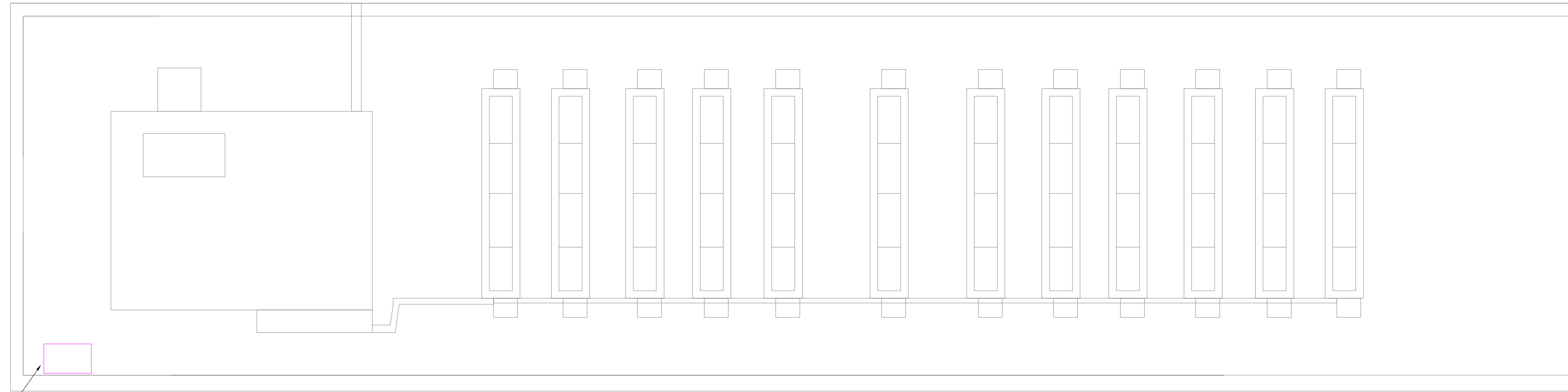
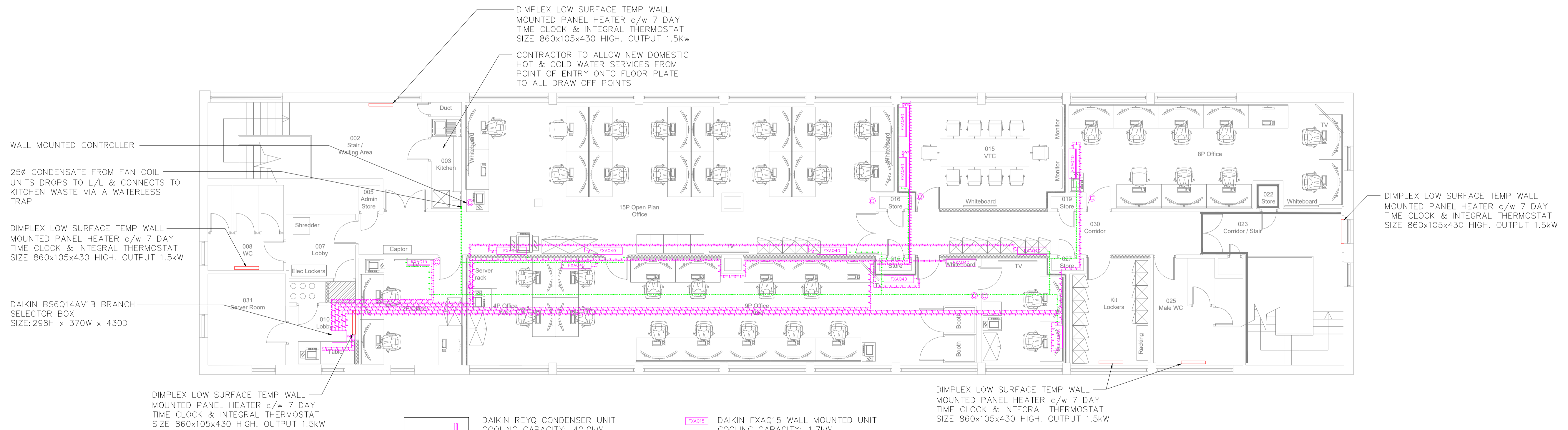


ALL CLIENTS INFOREMATION HAS BEEN REMOVED FROM THIS DRAWING.



DAIKIN REYQ20U SIZE:1685H x 1240W x 765D

THIS DRAWING IS NOT MEASURED AND IS NOT TO SCALE AND IS A ROUGH ESTIMATION OF THE LAYOUT AS SEEN FROM ABOVE



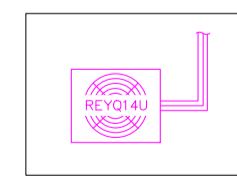
WALL MOUNTED CONTROLLER

25ø CONDENSATE FROM FAN COIL UNITS DROPS TO L/L & CONNECTS TO KITCHEN WASTE VIA A WATERLESS TRAP

DIMPLEX LOW SURFACE TEMP WALL MOUNTED PANEL HEATER c/w 7 DAY TIME CLOCK & INTEGRAL THERMOSTAT SIZE 860x105x430 HIGH. OUTPUT 1.5kW

DAIKIN B56Q14AV1B BRANCH SELECTOR BOX SIZE:298H x 370W x 430D

DIMPLEX LOW SURFACE TEMP WALL MOUNTED PANEL HEATER c/w 7 DAY TIME CLOCK & INTEGRAL THERMOSTAT SIZE 860x105x430 HIGH. OUTPUT 1.5kW



DAIKIN REYQ CONDENSER UNIT
COOLING CAPACITY: 40.0kW
HEATING CAPACITY: 50.0kW
SIZE: 290H x 1240W x 860D
WEIGHT: 314kg
SOUND PRESSURE LEVEL: 60dBA
LOCATION ON ROOF ABOVE FINAL POSITION TRC

FXAQ15 DAIKIN FXAQ15 WALL MOUNTED UNIT
COOLING CAPACITY: 1.7kW
HEATING CAPACITY: 1.9kW
SIZE: 290H x 795W x 266D
WEIGHT: 12kg
SOUND PRESSURE LEVEL: 32dBA

FXAQ40 DAIKIN FXAQ40 WALL MOUNTED UNIT
COOLING CAPACITY: 4.5kW
HEATING CAPACITY: 5.0kW
SIZE: 290H x 1050W x 269D
WEIGHT: 15kg
SOUND PRESSURE LEVEL: 32dBA

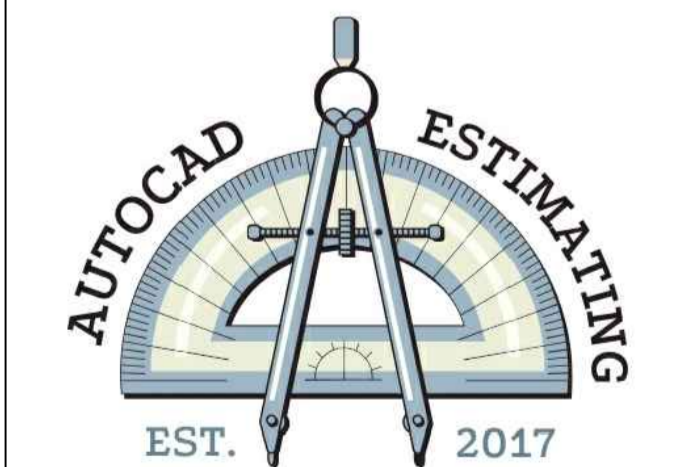
ALL FAN COIL UNITS SHALL BE PROVIDED WITH WALL MOUNTED CONDENSATE PUMPS

DIMPLEX LOW SURFACE TEMP WALL MOUNTED PANEL HEATER c/w 7 DAY TIME CLOCK & INTEGRAL THERMOSTAT SIZE 860x105x430 HIGH. OUTPUT 1.5kW

DIMPLEX LOW SURFACE TEMP WALL MOUNTED PANEL HEATER c/w 7 DAY TIME CLOCK & INTEGRAL THERMOSTAT SIZE 860x105x430 HIGH. OUTPUT 1.5kW

| | |
|---------------------|--|
| ISSUED FOR APPROVAL | |
| DESCRIPTION | |
| REVISIONS | |

STATUS ISSUED FOR APPROVAL



| | |
|-----------------|----------|
| CLIENT | |
| PROJECT | |
| TITLE | |
| SCALE | DESIGNED |
| CONTRACT NUMBER | DRAWN |
| DATE | CHECKED |
| DRAWING NUMBER | REVISION |