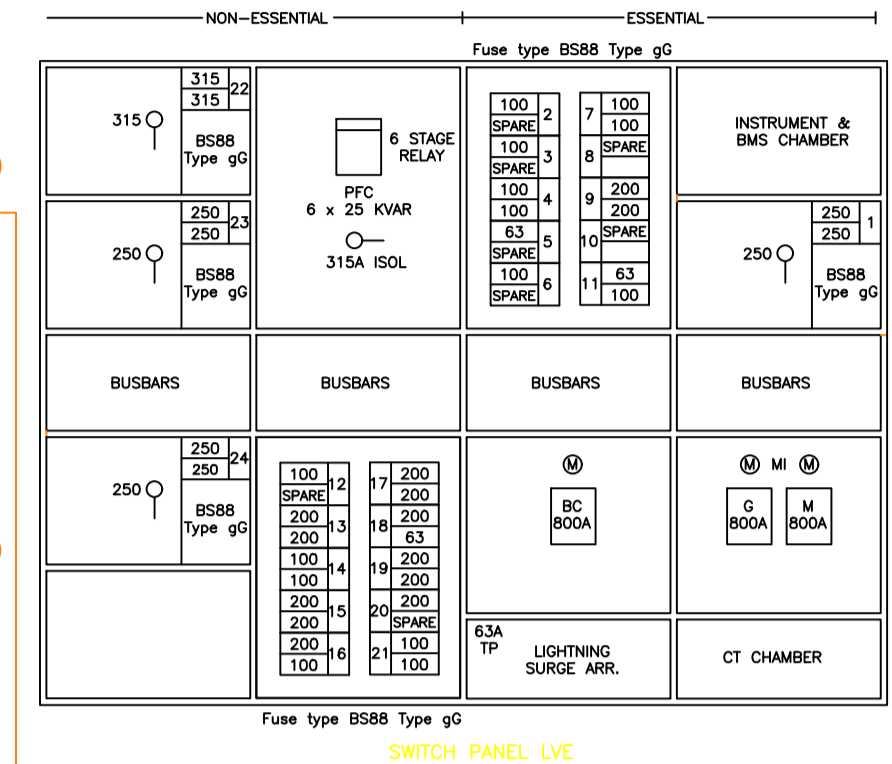
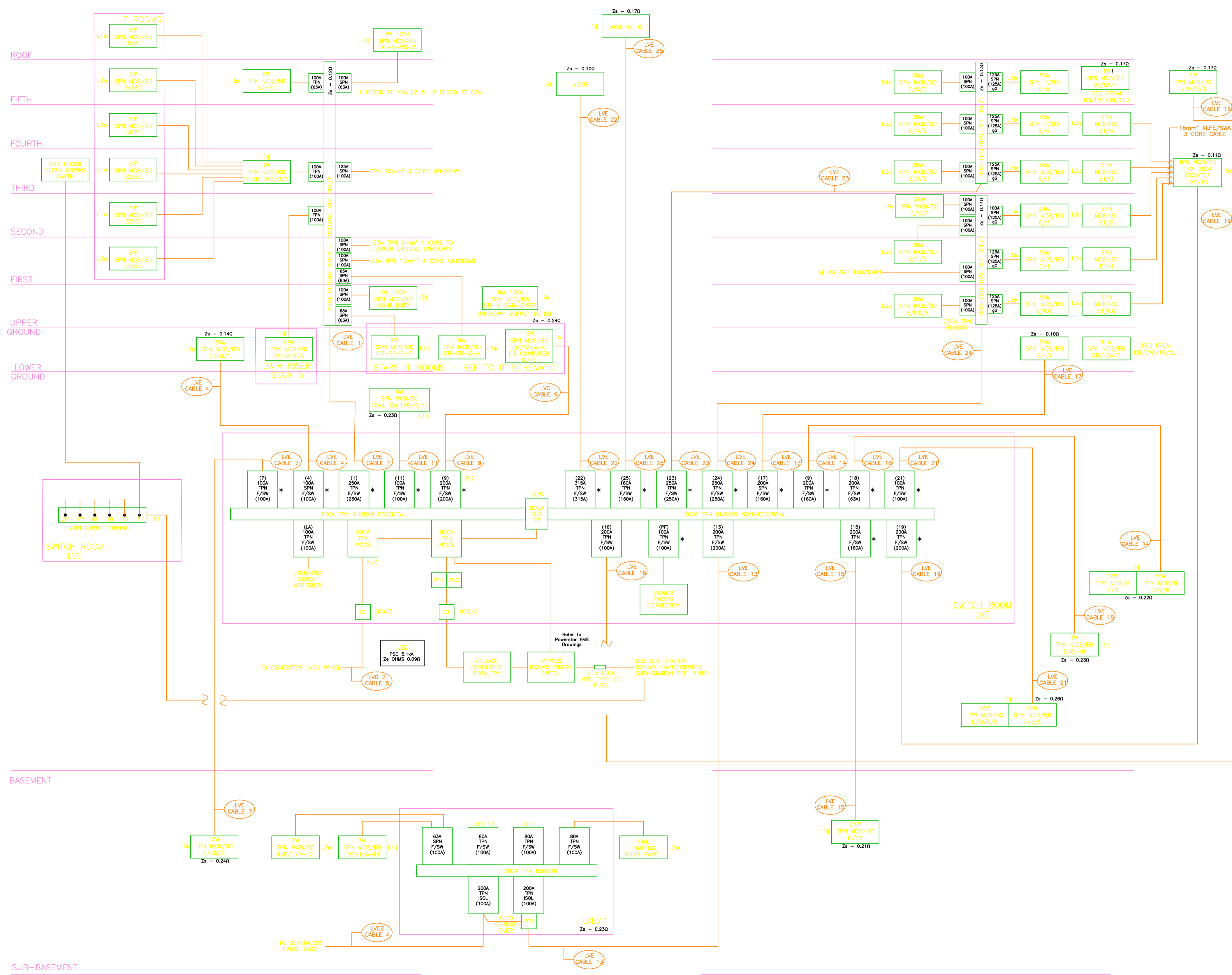


ALL CLIENTS INFORMATION HAS BEEN REMOVED FROM THIS DRAWING.

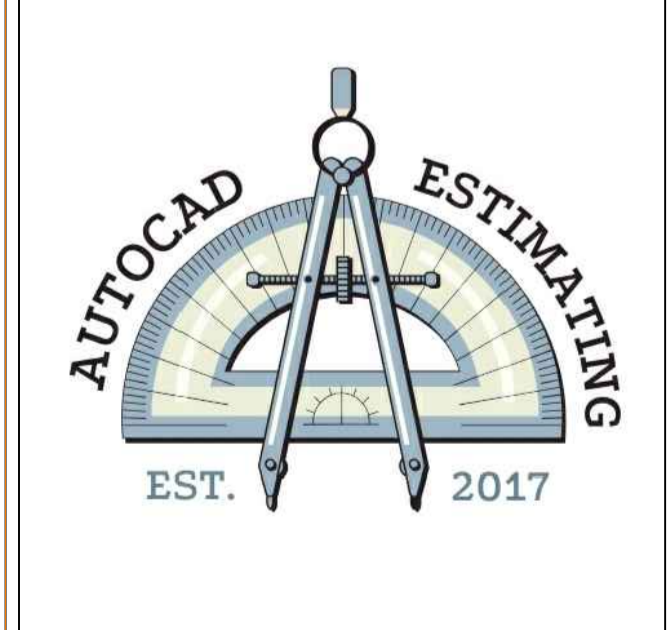


CABLE NUMBER	EXISTING SUB MAIN CABLE SIZES
1	95mm ² 4 Core SWA/XLPE
2	Spare
3	Spare
4	95mm ² 4 Core SWA/XLPE
5	Spare
6	Spare
7	25mm ² 4 Core SWA/XLPE
8	Spare
9	16mm ² 3 Core SWA/XLPE
10	Spare
11	25mm ² 5 Core SWA/XLPE
12	35mm ² 2 Core SWA/XLPE
13	35mm ² 4 Core SWA/XLPE
14	35mm ² 4 Core SWA/XLPE
15	95mm ² 4 Core SWA/XLPE
16	50mm ² 4 Core SWA/XLPE + 50mm ² Earth
17	95mm ² 2 Core SWA/XLPE
18	25mm ² 4 Core SWA/XLPE
19	95mm ² 4 Core SWA/XLPE
20	Spare Cable still connected
21	25mm ² 5 Core SWA/XLPE
22	120mm ² 4 Core SWA/XLPE
23	95mm ² 4 Core SWA/XLPE
24	95mm ² 4 Core SWA/XLPE LVC
25	50mm ² 4 Core SWA/XLPE + 50mm ² Earth
26	185mm ² Not Verified
27	185mm ² Not Verified
28	95mm ² Not Verified
29	35mm ² Not Verified
30	25mm ² SRLG-D Clean Earth
31	16mm ² 3rd Floor Comms Clean Earth
32	25mm ² x 3mm ² Earth Tape

* DENOTES BS88-2 FUSE TYPE

REV	DESCRIPTION	DATE
1/A	ISSUED FOR APPROVAL	-

STATUS: ISSUED FOR APPROVAL



CUSTOMER	-
PROJECT	-
TITLE	-
SCALE	DESIGNED
CONTRACT NUMBER	DRAWN
DATE	CHECKED
DRAWING NUMBER	REVISION

LVE