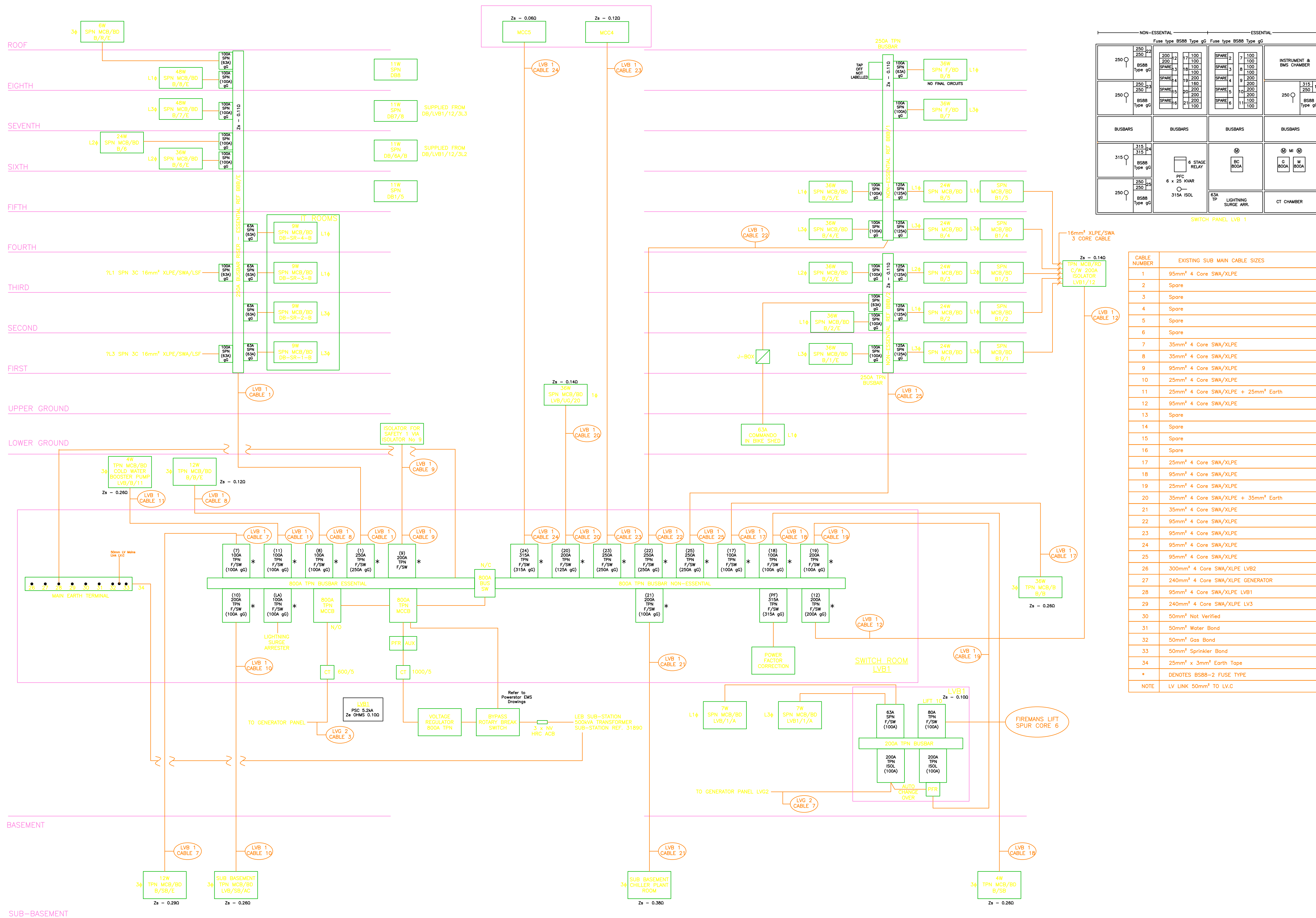


# ALL CLIENTS INFORMATION HAS BEEN REMOVED FROM THIS DRAWING.

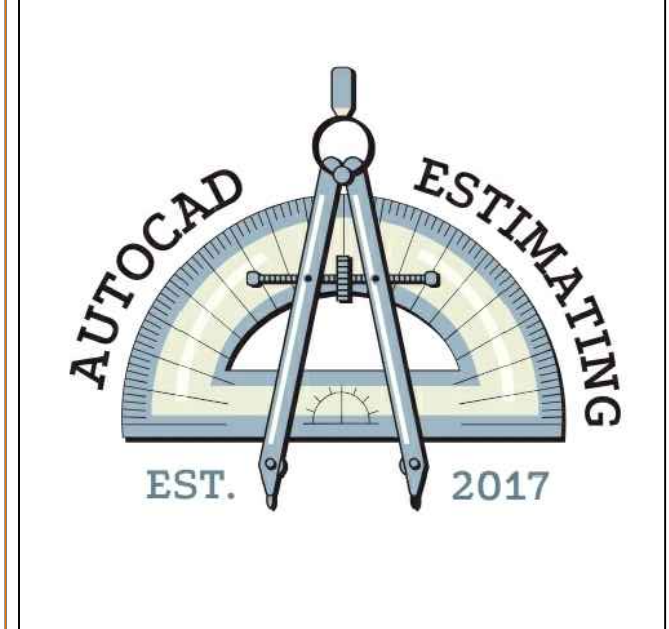


NON-ESSENTIAL				ESSENTIAL			
Fuse type BS88 Type gG		Fuse type BS88 Type gG		Fuse type BS88 Type gG		Fuse type BS88 Type gG	
250	250	200	17	100	SPARE	7	100
250	250	200	14	100	SPARE	8	100
250	250	200	11	100	SPARE	9	100
250	250	200	8	100	SPARE	10	100
250	250	200	5	100	SPARE	11	100
250	250	200	2	100	SPARE	12	100
250	250	200	1	100	SPARE	13	100
250	250	200	0	100	SPARE	14	100
250	250	200	0	100	SPARE	15	100
250	250	200	0	100	SPARE	16	100
250	250	200	0	100	SPARE	17	100
250	250	200	0	100	SPARE	18	100
250	250	200	0	100	SPARE	19	100
250	250	200	0	100	SPARE	20	100
250	250	200	0	100	SPARE	21	100
250	250	200	0	100	SPARE	22	100
250	250	200	0	100	SPARE	23	100
250	250	200	0	100	SPARE	24	100
250	250	200	0	100	SPARE	25	100
250	250	200	0	100	SPARE	26	100
250	250	200	0	100	SPARE	27	100
250	250	200	0	100	SPARE	28	100
250	250	200	0	100	SPARE	29	100
250	250	200	0	100	SPARE	30	100
250	250	200	0	100	SPARE	31	100
250	250	200	0	100	SPARE	32	100
250	250	200	0	100	SPARE	33	100
250	250	200	0	100	SPARE	34	100
250	250	200	0	100	SPARE	35	100
250	250	200	0	100	SPARE	36	100
250	250	200	0	100	SPARE	37	100
250	250	200	0	100	SPARE	38	100
250	250	200	0	100	SPARE	39	100
250	250	200	0	100	SPARE	40	100
250	250	200	0	100	SPARE	41	100
250	250	200	0	100	SPARE	42	100
250	250	200	0	100	SPARE	43	100
250	250	200	0	100	SPARE	44	100
250	250	200	0	100	SPARE	45	100
250	250	200	0	100	SPARE	46	100
250	250	200	0	100	SPARE	47	100
250	250	200	0	100	SPARE	48	100
250	250	200	0	100	SPARE	49	100
250	250	200	0	100	SPARE	50	100
250	250	200	0	100	SPARE	51	100
250	250	200	0	100	SPARE	52	100
250	250	200	0	100	SPARE	53	100
250	250	200	0	100	SPARE	54	100
250	250	200	0	100	SPARE	55	100
250	250	200	0	100	SPARE	56	100
250	250	200	0	100	SPARE	57	100
250	250	200	0	100	SPARE	58	100
250	250	200	0	100	SPARE	59	100
250	250	200	0	100	SPARE	60	100
250	250	200	0	100	SPARE	61	100
250	250	200	0	100	SPARE	62	100
250	250	200	0	100	SPARE	63	100
250	250	200	0	100	SPARE	64	100
250	250	200	0	100	SPARE	65	100
250	250	200	0	100	SPARE	66	100
250	250	200	0	100	SPARE	67	100
250	250	200	0	100	SPARE	68	100
250	250	200	0	100	SPARE	69	100
250	250	200	0	100	SPARE	70	100
250	250	200	0	100	SPARE	71	100
250	250	200	0	100	SPARE	72	100
250	250	200	0	100	SPARE	73	100
250	250	200	0	100	SPARE	74	100
250	250	200	0	100	SPARE	75	100
250	250	200	0	100	SPARE	76	100
250	250	200	0	100	SPARE	77	100
250	250	200	0	100	SPARE	78	100
250	250	200	0	100	SPARE	79	100
250	250	200	0	100	SPARE	80	100
250	250	200	0	100	SPARE	81	100
250	250	200	0	100	SPARE	82	100
250	250	200	0	100	SPARE	83	100
250	250	200	0	100	SPARE	84	100
250	250	200	0	100	SPARE	85	100
250	250	200	0	100	SPARE	86	100
250	250	200	0	100	SPARE	87	100
250	250	200	0	100	SPARE	88	100
250	250	200	0	100	SPARE	89	100
250	250	200	0	100	SPARE	90	100
250	250	200	0	100	SPARE	91	100
250	250	200	0	100	SPARE	92	100
250	250	200	0	100	SPARE	93	100
250	250	200	0	100	SPARE	94	100
250	250	200	0	100	SPARE	95	100
250	250	200	0	100	SPARE	96	100
250	250	200	0	100	SPARE	97	100
250	250	200	0	100	SPARE	98	100
250	250	200	0	100	SPARE	99	100
250	250	200	0	100	SPARE	100	100

CABLE NUMBER	EXISTING SUB MAIN CABLE SIZES
1	95mm <sup>2</sup> 4 Core SWA/XLPE
2	Spare
3	Spare
4	Spare
5	Spare
6	Spare
7	35mm <sup>2</sup> 4 Core SWA/XLPE
8	35mm <sup>2</sup> 4 Core SWA/XLPE
9	95mm <sup>2</sup> 4 Core SWA/XLPE
10	25mm <sup>2</sup> 4 Core SWA/XLPE
11	25mm <sup>2</sup> 4 Core SWA/XLPE + 25mm <sup>2</sup> Earth
12	95mm <sup>2</sup> 4 Core SWA/XLPE
13	Spare
14	Spare
15	Spare
16	Spare
17	25mm <sup>2</sup> 4 Core SWA/XLPE
18	95mm <sup>2</sup> 4 Core SWA/XLPE
19	25mm <sup>2</sup> 4 Core SWA/XLPE
20	35mm <sup>2</sup> 4 Core SWA/XLPE + 35mm <sup>2</sup> Earth
21	35mm <sup>2</sup> 4 Core SWA/XLPE
22	95mm <sup>2</sup> 4 Core SWA/XLPE
23	95mm <sup>2</sup> 4 Core SWA/XLPE
24	95mm <sup>2</sup> 4 Core SWA/XLPE
25	95mm <sup>2</sup> 4 Core SWA/XLPE
26	300mm <sup>2</sup> 4 Core SWA/XLPE LV2
27	240mm <sup>2</sup> 4 Core SWA/XLPE GENERATOR
28	95mm <sup>2</sup> 4 Core SWA/XLPE LV1
29	240mm <sup>2</sup> 4 Core SWA/XLPE LV3
30	50mm <sup>2</sup> Not Verified
31	50mm <sup>2</sup> Water Bond
32	50mm <sup>2</sup> Gas Bond
33	50mm <sup>2</sup> Sprinkler Bond
34	25mm <sup>2</sup> x 3mm <sup>2</sup> Earth Tape
*	DENOTES BS88-2 FUSE TYPE
NOTE	LV LINK 50mm <sup>2</sup> TO LV.C

REV. 1/A	ISSUED FOR APPROVAL	DATE
	DESCRIPTION	
	REVISIONS	

STATUS: ISSUED FOR APPROVAL



CUSTOMER	-
PROJECT	-
TITLE	-
SCALE	DESIGNED
CONTRACT NUMBER	DRAWN
DATE	CHECKED
DRAWING NUMBER	REVISION

## LV1